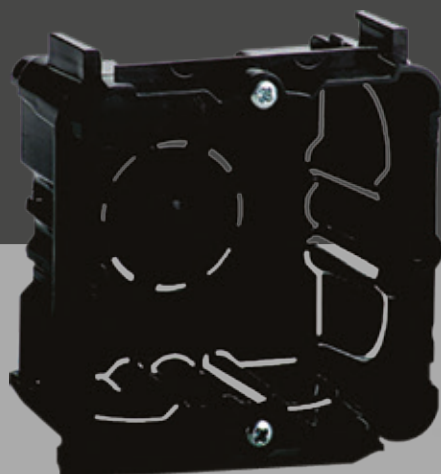
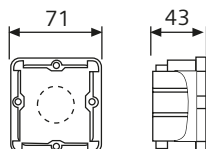


**BJC**

# Assorted material



## Flush-mounting boxes



### Flush-mounting box

2373-I

Thermoplastic material  
Dimensions: 71x71x43 mm

Packing 640

For recessing into solid non-combustible walls and ceilings after construction  
Temperature during installation -5 °C +60 °C



### Protective cover

2374-I

Allows you to locate the box after plastering

Packing 1000



### Mounting box 1 element for plasterboard wall

2377

**NEW**

Check availability



### Mounting box 2 elements for plasterboard wall

2378

**NEW**

Check availability



### Hole saw hardened teeth shank for plasterboard wall

2158000

**NEW**

diam. 68mm  
depth 40mm

Packing 1

## Viva and Coral surface box

PC-ASA. Resistant to UV rays and halogen free.

Fire-resistant. GWT 650°C.

RoHS.

Channel inlets 22x10, 16x10, 12x7 mm and

Tubes of diameters 25, 20 and 16 mm.

Dimensions of boxes once assembled:

1 part: 86x86x43 mm

2 parts: 157x86x43 mm

3 parts: 228x86x43 mm

4 parts: 299x86x43 mm

Packing 1

**Modular surface box**



**POLAR WHITE**  
**23460**

**MOON SILVER**  
**23460-PL**

**LAVA GREY**  
**23460-GL**

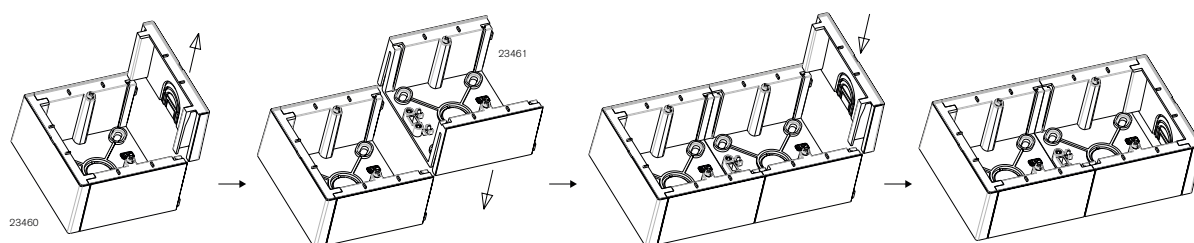
**Modular extension unit**



**23461**

**23461-PL**

**23461-GL**



## Bells & Buzzers

---



### Interference suppression bell

Alternating Ø 60 mm only  
230 V~  
Intermittent Use  
Packing 1

White  
614



### Surface buzzer

Interference suppression  
Only alternates AC 230 V  
Adjustable  
Intermittent Use  
Packing 10

White  
610-B

## 25A Socket outlets & Plugs

---



### 2P+E socket outlet

25 A 250 V~  
85x85x35 mm  
Accepts any 25 A 250 A 2P+E plug~/ MDS 20315  
The terminals hold cables of up to 10 mm<sup>2</sup> sections.  
The box recommended for this socket outlet is Ref. 2373-I  
Packing 5

White  
2225



### 2P+E plug

25 A 250 V~  
Packing 10

White  
2224-B